



# LEWESTON

SHERBORNE

## Leweston Appeal and Campus Developments 2010 and Beyond

### Statement from the Chair of the Governors:

Leweston recognises that to continue to offer a first class education for years to come we must continue to enhance and develop our facilities. We are delighted that the money raised by Leweston's Building for the Future Campaign has enabled significant campus investment and will continue to enable further investment over the coming year and into the future. Although an education is more than the building it takes place in, the facilities we make available to our pupils are of course of major importance. Our developmental plans as well as the extensive recent investment is detailed below. I firmly believe this will enhance the exceptional educational experience already offered at Leweston.

**Andrew May, Chairman of Governors**

### Recent Projects...

#### Classroom Upgrade completed Easter 2010

The first project to be funded by Leweston's appeal, this project was a complete refurbishment and upgrade of the Senior School Maths, English and Language classrooms. The brief was to create an enhanced teaching and learning environment for both the staff and the girls which incorporated new state-of-the-art IT facilities. The work was completed by the start of the summer term 2010 and has been met with much praise and enthusiasm by staff, girls and parents alike.

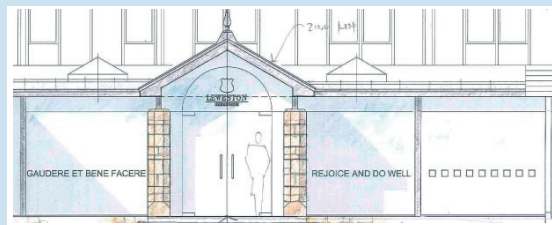


*"I am delighted with the transformation that has taken place. The upgraded classrooms have a bright, fresh, vibrant feel to them which encourages pupils to approach their learning with an even more positive attitude. The installation of the new ICT equipment in every room means that the latest teaching resources can be widely utilised, enhancing the range of tasks and activities offered to the girls."*

**Geoff Smith, Director of Studies**

### Ongoing Projects...

#### New Reception – Summer 2010



Plans for the new reception area involve expanding the existing space outwards to create a more welcoming and usable environment which offers opportunities to better showcase the work of our students. There will be a single entrance set in a glass frontage creating a light and welcoming space. The new reception will transform the appearance of the Senior School, vastly improve first impressions and demonstrate our commitment to providing an environment that does justice to the quality of education that is offered at Leweston. The aim is for this work to be completed by the time the pupils return in September 2010 or soon after.

#### The Relocation and Expansion of the School Shop Winter 2010-2011

Over the winter 2010/2011 the school shop will be relocated to the rear of the new reception. The shop will be able to provide a more extensive range of products in response to parental and pupil requirements. The shop will be more accessible in this location and improved ordering facilities will be developed.

### Swimming Pool Enclosure

#### Winter 2010-2011



The planned construction of an enclosed pool building will mean Leweston's pool can be used all year round and not only in daylight hours. The building will be a permanent fixture but has the benefit of offering direct access to the surrounding outdoor space in the summer and complete enclosure and temperature regulation in the winter. This development will add to the sports provision and allow all-year-round swimming on campus; the School will also be able to host competitive events. The structure will consist of an aluminium frame and Perspex panels which will filter 97% of UV rays. The building will include internal shower and changing facilities for winter and will have easily retractable sides allowing almost instant and unrestricted access to the outside when appropriate. This new structure will also enable the removal of the fencing between the pool and the tennis courts to give swimmers a full and far reaching view of the surrounding Dorset countryside. The existing swimming pool café and storage room will be refurbished to provide an additional hub for the outdoor sports and swimming and to enable us to offer improved hospitality for our parents and guests at future sporting events.



*'To be able to teach swimming throughout the year will equip all our girls and boys with a valuable life skill and enable the gifted to flourish.'*

**Angie Sparshott-Thompson**  
Head of Sport at Leweston Prep

### Projects 2011

#### Further Classroom Upgrades (Easter 2011)

Due to a re-evaluation of the school's requirements and the exceptional success of the recent Senior School classroom upgrade, the school intends to further invest in its remaining classrooms. This will take the form of an additional refurbishment of the further two classroom corridors to the same specification. Incorporated into this will be a dedicated music facility which will add to the existing provision elsewhere on campus. There will be improved performing arts spaces which will be ideally placed next to the existing school theatre and an extension of the current IT facilities with an additional computer suite. More information on this project will follow, both on the website and directly to parents.

*"I am delighted with the results of the recent investment in the school facilities made possible by the successful fundraising efforts of the Appeal. Together with other developments planned for the future, these investments are vital to improving our academic standard, propelling forward the intellectual and extra-curricular life of the girls and ensuring that Leweston continues to offer an education that is second to none."*

**Dr Geoffrey Guy, Chairman of the Appeal**

## Plans for the Future

### WHY WE MUST CONTINUE TO FUNDRAISE

The investment in Leweston's campus will not stop with the plans outlined above. Fundraising through our Building for the Future Campaign continues and the school envisages putting future funds towards a new Sixth Form Centre and accommodation to further enhance the Sixth Form experience at Leweston. This will help pupils develop the skills they need to go out into the world as well prepared and confident young women whose contributions to society will reflect the variety of opportunities placed before them at school.

Leweston is a school that has an exceptional and unique educational offering which we must continue to support with the necessary infrastructure. This continued investment will help take us forward into the future and affirm Leweston as a school that offers an inspiring and challenging education to girls from 2½ to 18 and boys from 2½ to 11 and to do this we need our friends' continued support. We trust that you share our excitement for the future and invite you to help us make it possible.

If you would like to support or find out more about Leweston's Building for the Future Campaign or any of these projects please contact **Margo Liddle** in the Development Office on **01963 211015** or email **liddlem@leweston.dorset.sch.uk**